

SPEC SHEET + MEASUREMENTS

PORT AUTHORITY.

Port Authority® Venture Waterproof Insulated Jacket. J362

Product photo



Venture out—regardless of the conditions. This fully seam-sealed jacket can take on wet and wind with 8K/5K weather protection and it's insulated to keep in warmth.

- 100% polyester shell and lining
- 8,000MM fabric waterproof rating
- 5,000G/M² fabric breathability rating
- Attached, adjustable hood with locking drawcord
- Full-length interior storm flap
- Interior zippered chest pocket
- Waterproof, molded center front zipper
- Hidden reverse coil zippered chest pocket
- Hidden reverse coil zippered pockets
- Adjustable tabs at cuffs
- Adjustable locking drawcord at hem
- Port Pocket™ for decoration access
- Insulation method: 5.9-oz. polyfill in hood, body and sleeves
- Water protection method: TPU laminate and durable water-repellent finish (DWR), fully seam-sealed

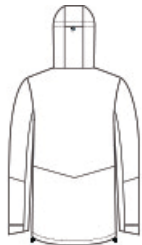
CARE INSTRUCTIONS

Machine Wash Cold Separately Or With Like Colors. Only Non-Chlorine Bleach When Needed. Tumble Dry Low. Do Not Iron.

Sketches



front



back

SPEC SHEET + MEASUREMENTS

PORT AUTHORITY

Port Authority® Venture Waterproof Insulated Jacket.
J362

PRODUCT MEASUREMENTS

	XS	S	M	L	XL	2XL	3XL	4XL
Body Length at Back	30 1/4	31 1/4	32 1/4	33 1/4	34 1/4	35 1/4	35 3/4	36 1/4
Chest	20 1/2	22	23 1/2	25	26 1/2	28	30	32
Sleeve Length from Center Back	35 3/4	36 1/2	37 1/4	38	38 3/4	39 1/2	40 1/4	41

Body Length at Back: Measured from high point shoulder to finished hem at back.

Chest: Measured across the chest one inch below armhole when laid flat.

Sleeve Length from Center Back: Measure from Center Back neck to shoulder point to sleeve hem.

SIZE CHARTS

	XS	S	M	L	XL	2XL	3XL	4XL
Chest	32-34	35-37	38-40	41-43	44-46	47-49	50-53	54-57

SPEC SHEET + MEASUREMENTS

PORT AUTHORITY.

Port Authority® Venture Waterproof Insulated Jacket.
J362

HOW TO MEASURE



CHEST

Measure under the arm and around the fullest part of the chest with arms down, keeping tape horizontal.

COLORS



Deep Black
PMS BLACK
C



Dress Blue
Navy
PMS 533C



Grey Smoke
PMS 426C